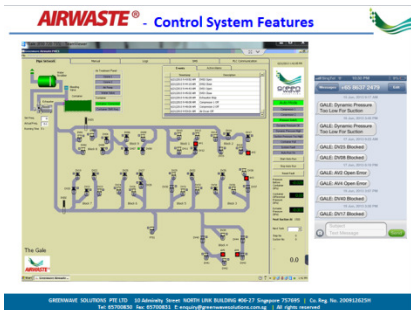




# Full-cycle Pneumatic Waste System Maintenance Services

- *Comprehensive Maintenance Plan*
- *System Repair / Upgrade / Renewal (life-cycle parts replacement)*
- *Control system Enhancement (SMS faults alert, Fire Protection Sub-system, Chute flushing Interface, System Operation log etc.)*
- *System Conversion*
- *Acoustic Treatment*
- *Odour control at Tank Rooms and Bin Centre*
- *Volume-control Hopper replacement/modification*
- *Refuse chute blockage removal*
- *Refuse pipe blockage removal*
- *Education on System Usage*



**This is a Pneumatic Waste Conveyance System**

Please **DO NOT THROW** the following items into the REFUSE HOPPER

|  |   |   |  |
|--|---|---|--|
| <br><b>DO NOT FORCE THRU HOPPER</b> | <br><b>ELECTRICAL APPLIANCES</b> | <br><b>FOLDABLE REFUSE</b> | <br><b>NEWSPAPER, MAGAZINES, BOOKS ETC.</b> |
| <br><b>LONG REFUSE</b>              | <br><b>BURNING OBJECTS</b>       | <br><b>HEAVY REFUSE</b>    | <br><b>CORROSIVE CHEMICALS</b>              |

A Combined Effort By 



## Maintenance Services Track Record:

- Summerhill
- The GALE
- Waterbank @ Dakota
- Goodwood Residence
- Orange Grove Residences
- Monterey Park
- The PIER
- Republic Polytechnic
- TreeLodge @ Punggol
- Jurong Food Hub
- Esparis
- SembWaste Pte Ltd  
*(software support for suction vehicle)*